

6-1110SL Quarter-Turn with Handle SNAP-LINE

Tool-less installation, Key or Tool operable, Integrated handle

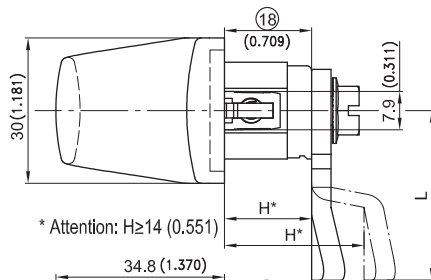


Product Notes:

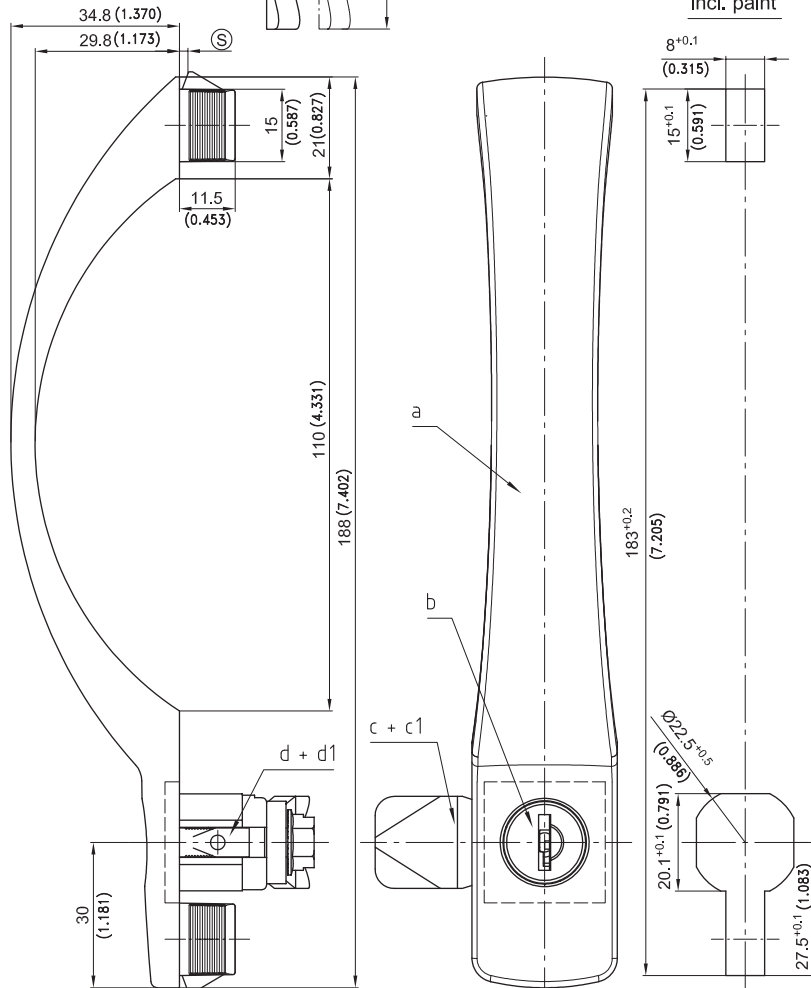
- RH and LH application - accomplished by turning key cylinder or insert 90°
- Handle can be equipped with key cylinder or insert
- Installed by a simple push into the cutout
- **NOTE: H-dimension of the cam must be greater than 14mm (0.551)**
- **NOTE: 3-point cam should not be used with key cylinder**
- Bowed handle

Material:

- **Handle:** Zinc Die, Matt Chrome Plated
- **Other surfaces on request**
- **Housing:** Zinc Die
- **Wings:** Sintered Steel
- **Grounding clip:** Stainless Steel
- **Cams:** see c) and c'1)

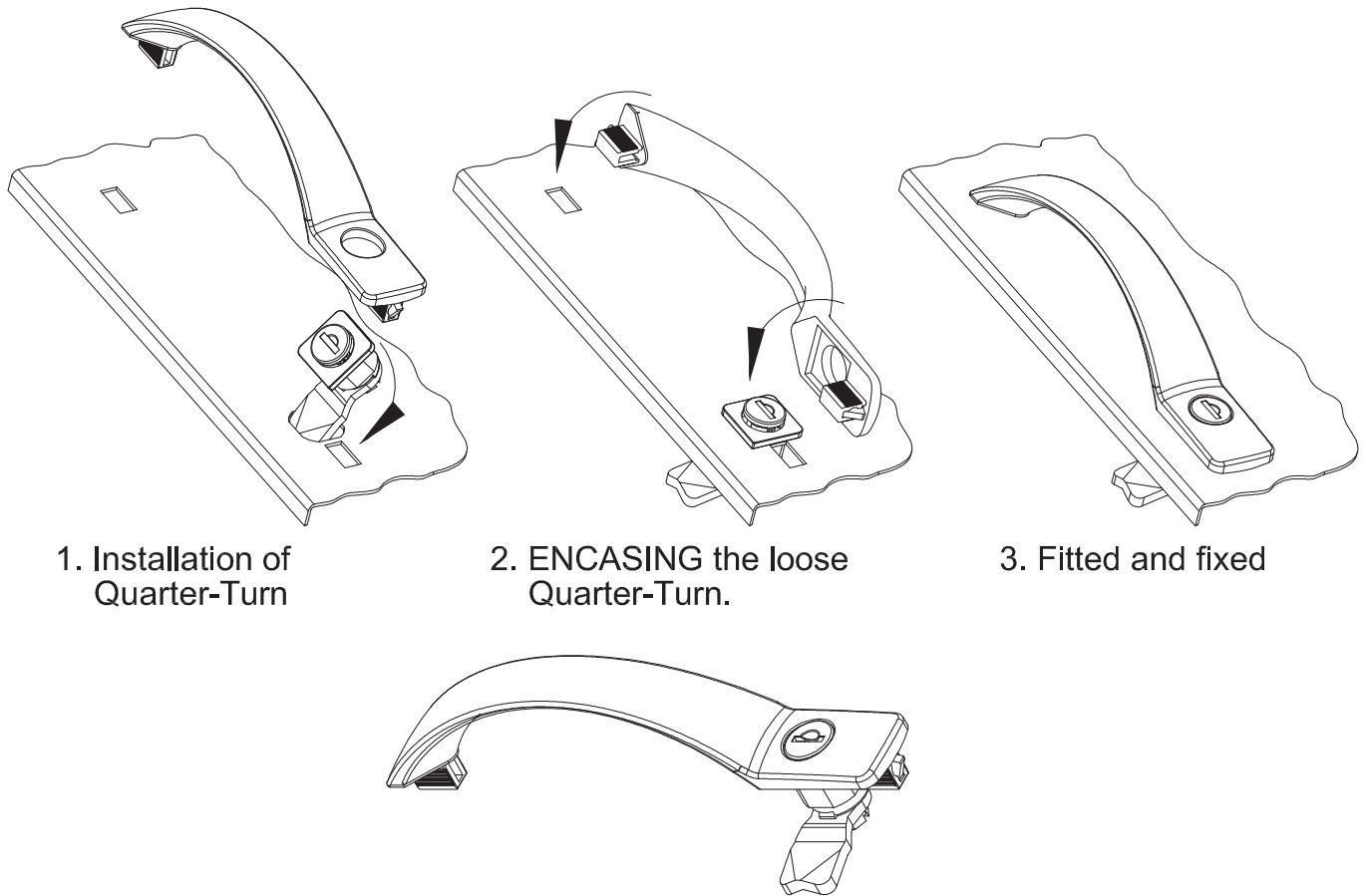


Please contact DIRAK for the Assembly-partnumber of a completely pre-assembled SNAP-LINE Bowed Handle. Advise following details:
 Door-thickness,
 Application: cam 90° to handle, RH/LH
 cam in line with handle,
 Cam or 3-point cam H in mm,
 Cylinder or Insert,
 Grounding clip: Y/N



6-1110SL Quarter-Turn with Handle SNAP-LINE

Tool-less installation, Key or Tool operable, Integrated handle



1. Installation of Quarter-Turn

2. ENCASING the loose Quarter-Turn.

3. Fitted and fixed

a) Bowed handle with Wings with key cylinder				
	Clamping Range [Ⓢ]	With Grounding Clip	Without Grounding Clip	See Page
Keyed alike DIRAK 1333*	0.8 - 1.5	413-9305.00-00012	413-9301.00-00012	
	1.3 - 2.0	413-9305.00-00016	413-9301.00-00016	
	1.5 - 2.2	413-9305.00-00020	413-9301.00-00020	
Keyed different	0.8 - 1.5	413-9306.00-00012	413-9302.00-00012	
	1.3 - 2.0	413-9306.00-00016	413-9302.00-00016	
	1.5 - 2.2	413-9306.00-00020	413-9302.00-00020	
b) With insert (not shown)	0.8 - 1.5	413-9307.00-00012	413-9303.00-00012	
	1.3 - 2.0	413-9307.00-00016	413-9303.00-00016	
	1.5 - 2.2	413-9307.00-00020	413-9303.00-00020	
Other [Ⓢ] - dimension on request				
Inserts				01.24, 01.42, 01.98, 01.99
c) Cams				01.24, 01.42, 01.101, 01.102, 03.42
c1) 3-point cams				01.101, 03.43
d) Grounding clip		200-1101.04-00000	200-1101.04-00000	
d1) Grounding clip for handle with cylinder		200-1103.04-00000	200-1103.04-00000	
* with stainless dust-shutter				